

INSTRUMENT
APPROACH
CHART - ICAO

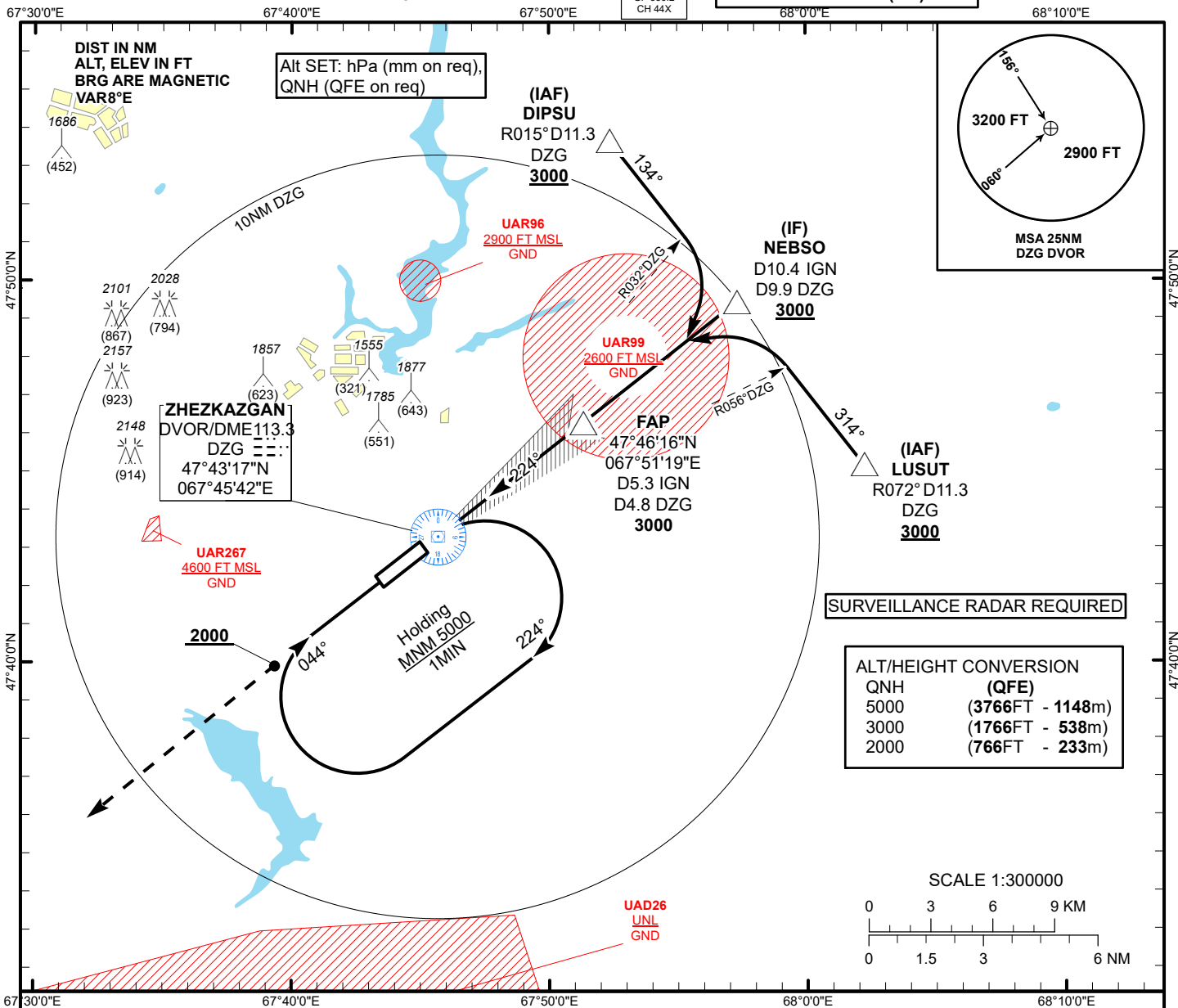
AERODROME ELEV 1251 FT

HEIGHTS RELATED TO
THR 22 ELEV 1234 FT

ILS
LLZ 110.7
IGN
GP 330.2
CH 44X

ZHEZKAZGAN TOWER 127.1
ZHEZKAZGAN ATIS (EN) 131.4
ZHEZKAZGAN ATIS (RU) 122.4

ZHEZKAZGAN
ILS/DME
RWY 22



MISSED APPROACH

Climb on track 224° to 3000 ft.
After passing 2000 ft radar
vectoring will be provided.

RADIO FAILURE

In the case of RCF
climb on track 224° to 3000
outbound to 8.0NM DZG.
Turn left, climb to 5000
to DZG and join
to holding pattern.

TRANSITION ALT
10000

FAP

D5.3 IGN
D4.8 DZG

3000

IF
NEBSO
D10.4 IGN
D9.9 DZG

ILS RDH 49
ELEV 1234
THR RWY22

DVOR/DME
DZG

GP 3.0°

224°

224°

0 1 2 3 4 5 6 7 8 9 10 11

Aircraft Category		A	B	C	D	DME IGN - THR	NM	5.3	5	4	3	2	1
Straight-in Approach OCA/H						DME DZG	NM	4.8	4.5	3.5	2.5	1.5	0.5
	CAT I	1434(200)	1434(200)	1443(209)	1453(219)	ALTITUDE	FT	3000	2897	2570	2246	1923	1602
						HEIGHT	FT	1766	1663	1336	1012	689	368
DME IGN ZERO RANGED TO THR RWY 22													
Aerodrome Operating Minima DH ft x RVR(CMV)	CAT I					GS	Kt	80	100	120	140	160	180
						Rate of descent (5.2%)	ft/min	420	530	640	740	850	960

ZHEZKAZGAN
ILS/DME

AERONAUTICAL DATA TABULATION

ILS approach to RWY22 from DIPSU, NEBSO, LUSUT	
Fix/point	Coordinates
DVOR/DME DZG	47° 43' 17.1"N 067° 45' 41.7"E
(FAP) D5.3 IGN D4.8 DZG	47° 46' 15.7"N 067° 51' 18.6"E
NEBSO (IF) D9.9 DZG D10.4 IGN	47° 49' 25.3"N 067° 57' 17.2"E
DIPSU (IAF) R015°,D11.3 DZG	47° 53' 40.1"N 067° 52' 20.2"E
LUSUT (IAF) R072°,D11.3 DZG	47° 45' 10.2"N 068° 02' 13.4"E
THR RWY 22	47° 42' 58.68"N 067° 45' 07.14"E
LOC IGN	47° 41' 50.6"N 067° 42' 59.2"E